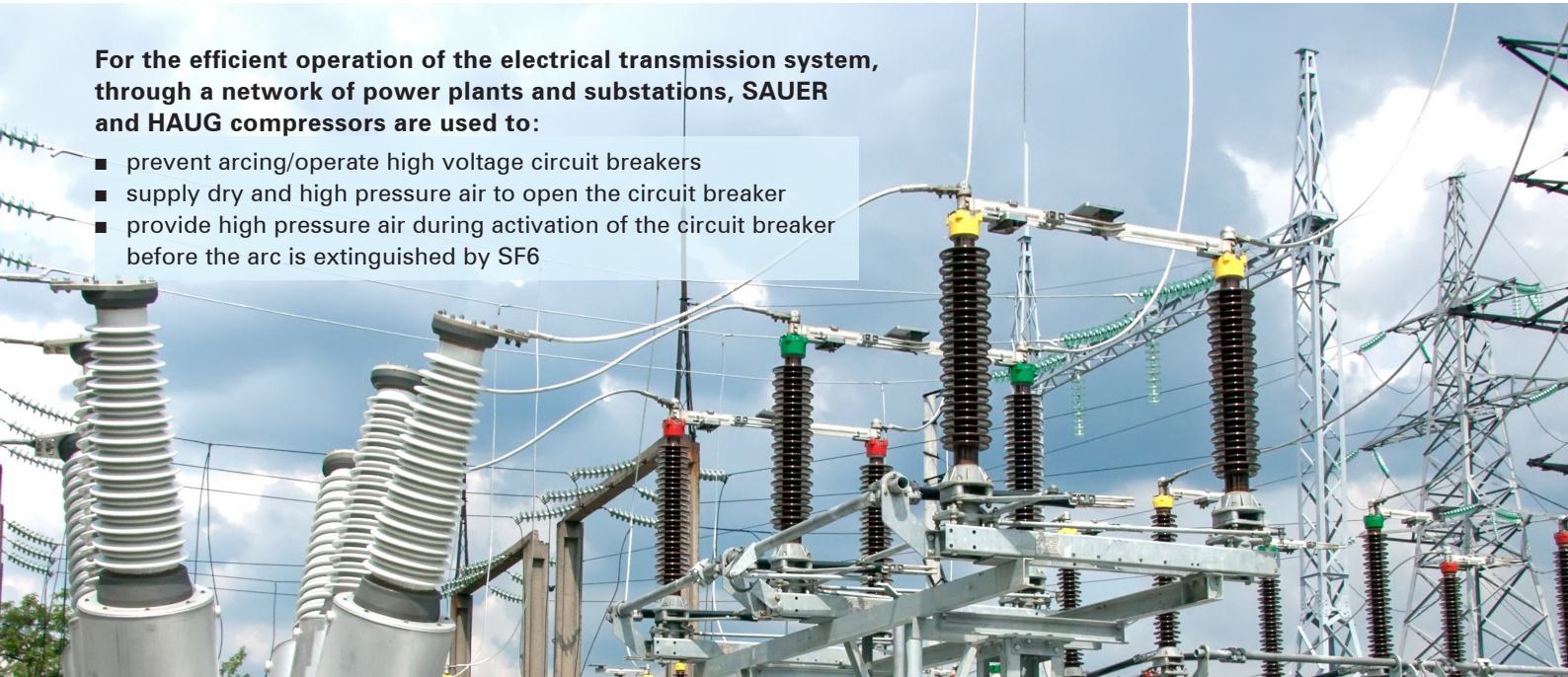


Compressor solutions for power transmission stations



For the efficient operation of the electrical transmission system, through a network of power plants and substations, SAUER and HAUG compressors are used to:

- prevent arcing/operate high voltage circuit breakers
- supply dry and high pressure air to open the circuit breaker
- provide high pressure air during activation of the circuit breaker before the arc is extinguished by SF6



Product line

SAUER

Product ranges

Mistral

Hurricane

HAUG.Cygnus

Variants

Basic
ComSilent

Volumetric flow

67 – 127 m³/h

Pressure range

30 – 270 barg

Media

Air



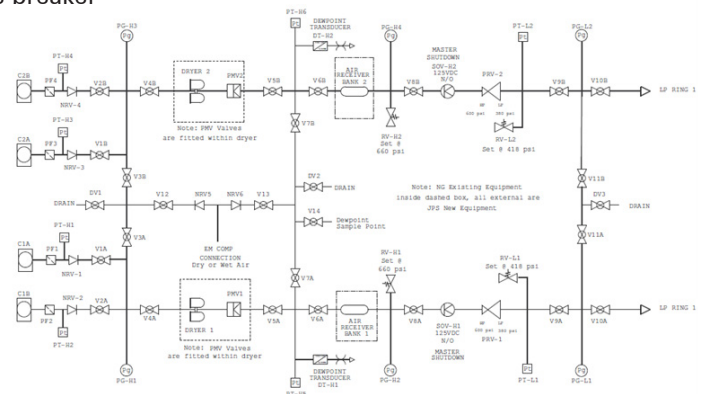
Compressors

Sauer and Haug compressors are being used in the demanding circuit breaker mechanism to avoid voltaic arcs formation with the supply of compressed dry air between 30 – 270 barg.

Common supply

Energy power substation plants have high pressure systems to cut the voltaic arc which is generated when switching circuits in high tensions (up 70 kV to 500 kV). Compressed air is blasted up to open the breaker contact, at the same time this extinguishes the arc flame.

The most common application requires pressured air at 30 barg for smaller substations with up to 275 kV. For the larger stations up to 500kV at 270 barg compressed air system is installed. The air is stored in high pressure receiver vessels (150 – 250 barg) due to its volume (physical space) and to get it dryer.



Dependable up to 500 bar – anywhere, anytime, anygas.

J.P. Sauer & Sohn Maschinenbau GmbH

Brauner Berg 15
24159 Kiel/Germany

PHONE +49 431 3940-0
FAX +49 431 3940-24

E-MAIL service@sauercompressors.de
WEB www.sauercompressors.com